

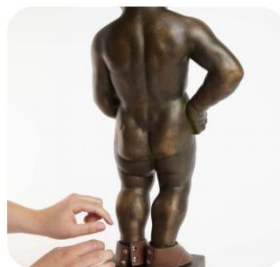


## The dressing in pictures



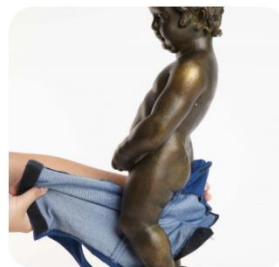
### STEP 1: PREPARE THE FOOTWEAR

The dressing is done starting from the bottom.



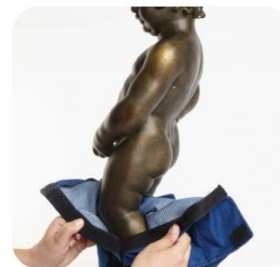
### STEP 2: PLACE THE SHOES ON THE FEET.

The shoes must be adjusted first because the trousers are then placed over the top.



### STEP 3: TROUSERS

The legs of the statue are attached to the plinth. The trousers should be fitted around the knees.



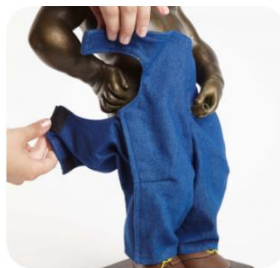
### STEP 4: PUT ON THE TROUSERS

The trousers must be fitted at the front and back of the statue.



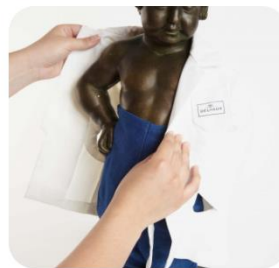
### STEP 5: ATTACH THE TROUSERS

Velcro and buttons on the side allow the trousers to be attached to the legs.



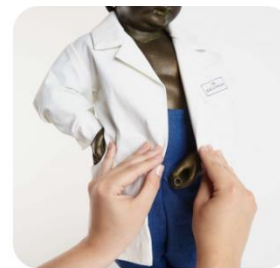
### STEP 6: ADJUST THE TOP OF THE TROUSERS

The same principle applies as for the legs; the top of the trousers must be fitted between the bust and the arms. These parts must be attached to the hips.



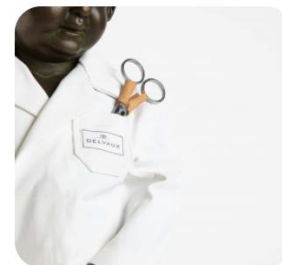
### STEP 7: PUT ON THE COAT, JACKET OR APRON

The top item of clothing is also attached between the arms and the bust.



### STEP 8: ATTACH THE COAT, JACKET OR APRON

The top item of clothing should be perfectly adjusted to the arms.



### STEP 9: ADD ACCESSORIES

Many outfits include various accessories.



### STEP 10: PLACE THE HAT ON HIS HEAD

A complete outfit includes shoes and a hat.



### STEP 11:

Check the back of the statue.



### STEP 12:

The statue is ready!